

Welcome to the latest edition of Demolition Update for 120, 151, 171, and 191 Wyndford Road. This newsletter aims to provide information about the demolition works and how we will minimise disruption to the surrounding neighbourhood. More newsletters will be distributed to keep you updated.

## TOPDOWNWAY® AT 120 WYNDFORD ROAD



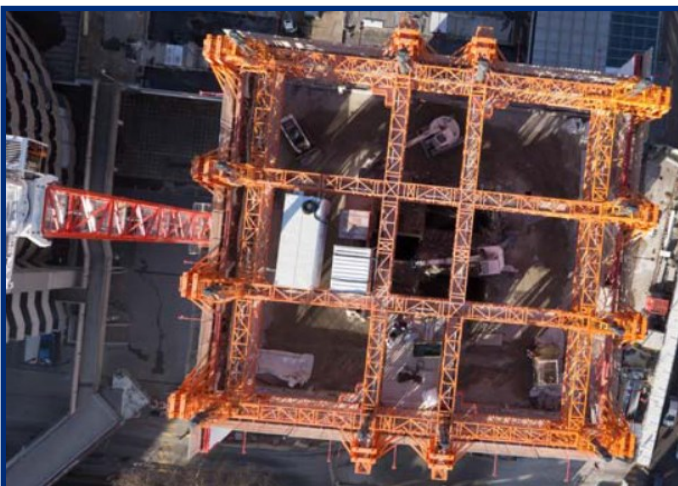
We are gearing up for the arrival of the TopDownWay® System at 120 Wyndford Road. This is an innovative modular system whose shape can be adapted to that of any high rise structure to be demolished.

On site, the concrete base has been formed. Next, the tower crane will be constructed and will rise up higher than the building. Then each section of the TopDownWay® system will be hoisted to the top of the building using the tower crane. The crane will also be used to lift the necessary tools and machinery into place to carry out the works.

Once everything is in position, the teams will dismantle the building on a floor by floor basis. As the works proceed, the system descends in a controlled manner and positions itself on the next floor down.

TopDownWay® is an intelligent containment system as it retains all the material generated by the demolition works within the building. As a result, there is noticeably less noise, vibration and dust.

We are aiming to have the building fully dismantled by summer 2025.



# Demolition Update

## 151, 171, 191 WYDNFORD ROAD

We would like to take this opportunity to thank the local community for their patience and co-operation during the drilling works at 151, 171, and 191 Wyndford Road.

We understand that this phase of the works has been noisier than previous phases. To help minimise the noise, we have put in place co-ordinated break times - quiet times - and introduced some sound barriers, along with noise monitoring. These measures will remain in place until the drilling works have been completed around the end of October.

As soon as the date for demolition is set, a further update will be issued.



## SAFEDEM AND THE LOCAL COMMUNITY

Our Community Liaison Manager, Tracey Sinclair, visited Wyndford Nursery School to meet with staff and children. Tracey showed the children protection equipment and talked about road safety and the dangers of demolition sites. The children enjoyed trying on protective gear, like hard hats, ear defenders, and safety gloves and glasses. Tracey is hoping to visit the school again soon.



We are proud to support Maryhill Football Club who celebrate their 140 year anniversary this year. Safedem have purchased season tickets and donated these to the Shakespeare Youth Club. 6 lucky ticket holders will be able to watch every home match.

## SITE SAFETY

We would ask everyone within the community to stay away from the sites and to take extra care crossing the nearby roads.

**SITE  
WORKS  
KEEP OUT**

Our operational hours will be Mon to Fri 8am – 6pm with occasional weekend working if necessary, (currently every second Saturday 8am—1pm).

There will be no works carried out over the Christmas and New Year Holidays.

**SAFEDEM LTD** Arthurstone House, Liff Road, Dundee, DD2 4TD  
[www.safedem.co.uk](http://www.safedem.co.uk) Tel: 01382 811444 email: [clteam@safedem.co.uk](mailto:clteam@safedem.co.uk)